

WTA
2007 - 2024



A WORKBOOK OF

Hospitality Architecture

HOSPITALITY



CONCEPTUAL AND COMPLETED HOSPITALITY PROJECTS

Highlands Hotel	Legazpi City, Albay	Sunwest Group Holding Company, Inc.	2024	Golden Bay Hotel	Pasay City, Metro Manila	Jardin Wong (Golden Bay Properties)	2018
Highlands Clubhouse	Legazpi City, Albay	Sunwest Group Holding Company, Inc.	2024	Lanson Place Hotel	Pasay City, Metro Manila	Pearl Energy Philippines Operating, Inc.	2018
Adama Resort	Puerto Princesa, Palawan	8990 Holdings Inc.	2022	Seascape Hotel	Badian, Cebu	International Silverwings Investments Inc.	2018
Safari Escape Glamping Resort	Agoncillo, Batangas	My Sanctuary Wellness Center, Inc.	2021	Aquascape Hotel	Badian, Cebu	International Silverwings Investments Inc.	2017
Ondus Boracay Hotel	Malay, Aklan	Mezen Realty Corporation	2020	Bitoon Hotel	Cebu City, Cebu	N/A	2017
Lamba Resort	Legazpi City, Albay	Sunwest Group Holding Company, Inc.	2020	Palo Leyte Hotel	Palo, Leyte	Dexter Julio	2107
CFI Co-tel by Swiss-Belhotel	Carreta, Cebu	CFI Community Cooperative	2019	East Sands Resort	Panglao, Bohol	Alturas Group	2017
The Wave Osmeña, Cebu	Osmeña, Cebu	CFI Community Cooperative	2019	Tikling Island Sorsogon (RPL Hotels)	Matnog, Sorsogon	LKY Development Corp.	2017
CDO Hotel	Cagayan De Oro, Misamis Oriental	Geredah Development Corporation	2019	Grand Galleon Hotel	Cebu City, Cebu	Llorele Development Corp.	2016
Naga Hotel	Naga City, Camarines Sur	Naga Queenstown Realty & Development Inc.	2019	Imperial Place Resort and Hotel	Puerto Prinsesa City, Palawan	Imperial Palace	2016
Sheraton Hotel	Parañaque City, Metro Manila	Sheraton	2019	The Arbor Hotel	Baguio City, Benguet	Playinn Inc.	2015
Argo Malate	Manila City, Metro Manila	Argo	2019	Summit Hotel	Antipolo City, Rizal	Robinson's Land Corp.	2015
Urban Hotel Argo Boracay	Malay, Aklan	8990 Holdings Inc.	2019	The Carmen Hotel	Naga City, Camarines Sur	Guevent Investment Development Corp.	2014
Malinao Siargao	Siargao, Surigao del Norte	GCI Hospitality	2019	Hidden Leaf	Puerto Prinsesa City, Palawan	N/A	2012
Hotel South Drive	Baguio, Benguet	Valleybread, Inc.	2018	Swiss Belhotel Blulane	Manila City, Metro Manila	Bing Uy	2010
Pico Sands Hotel	Nasugbu, Batangas	SM Prime Holdings, Inc.	2018	The Oriental Legazpi	Legazpi City, Albay	LKY Development Corp.	2010
ECHO	Quezon City, Metro Manila	Robinson's Land Corp.	2018	Bridgeway	Legazpi City, Albay	LKY Development Corp.	2009
Block 12 MOA	Pasay City, Metro Manila	SM Hotels & Convention Corp.	2018	Oriental Leyte	Palo, Leyte	LKY Development Corp.	2009
Banaue Hotel and Youth Hostel	Banaue, Ifugao	TIEZA	2018				

LANSON PLACE HOTEL

LOCATION:	PASAY CITY, MANILA
CLIENT:	LANSON PLACE HOSPITALITY LTD. SM HOTELS AND CONVENTIONS CORP.
YEAR:	2018
PLOT AREA:	4,501.64 SQM
FLOOR AREA:	GFA = 29,198.29 SQM CFA = 40,961.79 SQM
STOREYS:	TWELVE (12)
STATUS:	FORMAL OPENING APRIL 2024, MINIMAL RECTIFICATION OF CONSTRUCTION OF AMENITIES AND SERVICE AREAS.

Embark on a journey of refined elegance and unparalleled luxury at Lanson Place Hotel, Manila’s newest four-star sanctuary crafted by SM Hotels Inc. Merging architectural ingenuity with scenic inspiration, WTA Architecture and Design Studio masterfully oversaw the technical drawings and construction, ensuring a harmonious fusion of form and function. The hotel’s facade is a testament to this artistry, with organic curves mirroring the gentle undulations of Manila Bay’s waters, creating a captivating visual spectacle.

Comprising 400 meticulously designed rooms, Lanson Place Hotel offers a haven of comfort and sophistication. Beyond its lavish accommodations, the hotel boasts state-of-the-art facilities catering to Meetings, Incentives, Conferences, and Exhibitions tourism, ensuring seamless events and gatherings.

Within its interiors, high-end finishes adorn every corner, reflecting an unwavering commitment to excellence. Operated by Lanson Place, renowned for its exacting standards of hospitality, guests can expect nothing short of perfection. From personalized service to exquisite amenities, every aspect of the Lanson Place experience is crafted to exceed expectations, making it a destination of choice for discerning travelers seeking an unforgettable stay in the heart of Manila.





Dining Options



Main Lobby



Co-Working Spaces



Lobby Lounge

THE ORIENTAL LEGAZPI

LOCATION:	LEGAZPI, ALBAY
YEAR:	LKY DEVELOPMENT CORPORATION
FLOOR AREA:	2010
STOREYS:	15,000
STATUS:	6
	COMPLETED

Like the proverbial castle on a hill, The Oriental Legazpi sits atop Taisan Hills, commanding the best views of the majestic Mayon volcano. The design program called for an ultra-modern contemporary hotel that takes note of the site as a place of fond nostalgic memories and breathtaking views. The idea was to create by respecting. By making only positive interventions and additions we pay homage to and embrace this site of memory. The opportunity to create a crystalline palace was evident in the structural framework of the existing building.

The 116 guest rooms are all faced with full glass views of Legazpi and Mayon. Custom-designed furniture keeps the theme of urban modernity with its streamlined forms and polished white finishes. The white walls reflect the highest housekeeping standards yet the romance of the setting is maintained by the tactile feel of textured wallpaper patterns, rich leather wall finishes, and woven carpets. The multitude of lighting options is kept bright and warm, enhancing colors and eliminating shadows. Best of all, full glass doors open up to wide balconies where one can enjoy the crisp mountain air.



THE CRYSTAL PALACE

This crystallinity is realized most strongly in the hotel’s main lobby where the sun enters the skylight and filters through the crisscrossing beams that create a kaleidoscope of light and shadow that falls on the gleaming white marble floors, as it hits the globular crystal chandeliers. This is your welcome view of The Oriental. The rest of the hotel opens up through huge bay windows and full-height glass doors framed in white powder-coated aluminum trimmings. This creates an expansive, seemingly endless, lobby space on the ground floor - a sleek modern interpretation of contemporary urban hotel living.

A new floor was added to alter and better structure the proportions of the hotel. The 8-meter high space serves as a penthouse ballroom with an amazing backdrop that defines the hotel from its backdrop. This space is anchored by a cubist crown that serves as the hotel’s marquee and also acts as a beacon that is visible from the rest of the city. From outside, the hotel’s luminous, airy quality, accented by white-washed walls stands out in stark contrast to verdant greens and blue skies. This is then underlined by retaining strips of the existing cyclopean volcanic rock walls.



Guest room interior and balcony. The 116 guest rooms are all faced with full glass views of Legazpi and Mayon Volcano.



The expansive lounge and pool area pays tribute to the Mayon Volcano.



Main entrance to The Oriental.

PATIO PACIFIC BORACAY

LOCATION: BORACAY ISLAND, AKLAN
CLIENT: CHARLEX INTERNATIONAL
STATUS: COMPLETED

Almost thirty years since its original development, the team behind Patio Pacific Boracay (formerly Pink Patio) sought out WTA to re-design the 65-room boutique hotel with a refreshing, hip and modern concept tailored to cater to the current market.

The interiors tell a story of a ship set sail. Textured walls represent the infamous white sand beaches of Boracay Island, the pops of accent color evoke the unpredictable nature of ocean water, and the wooden element embodies that of a massive seafarer bound for an uncharted paradise to escape the hustle and bustle of the urban life.

To maximize the potential of the building envelope, vertical elements are introduced throughout the facade of the development to break the monotony of its horizontal configuration.



THE CARMEN HOTEL

LOCATION:	NAGA CITY, CAMARINES SUR
CLIENT:	GUEVENT INVESTMENT DEVELOPMENT CORP.
YEAR:	2014
FLOOR AREA:	3,100 SQM
STOREY:	4
STATUS:	COMPLETED

With a flowing cladding echoing the Naga River, The Carmen – a 4-storey boutique hotel – welcomes its guest to discover the serenity of a waterfront in Naga City, Camarines Sur, Philippines. Standing on a 2,415-square meter property with a gross floor area of 3,100 square meters, it services 45 guest rooms supported by amenities and provisions for retail at the ground floor.

Located in the busiest road of city, the project refines an existing structure chosen to be converted into a four-star hotel. the position of the actual building and the setup of the surroundings make any natural view difficult to frame from the front facade. Starting from this, the approach was to design the building with an inward orientation, leading to the main point of interest of the site – the Naga River, where numerous festivities such as the famous Penafrancia Festival take place. This concept of introversion leads the eyes of passersby to a set of teasers, serving as a preview of what lies inside the hotel.

The Carmen develops a set of visual cues inviting its users into its inner charm and engaging them to a sequence of discovery stages gradually unfolding to the serene pool deck at the back with an admirable view of the Naga river. The facade reflects the general concept of the project by draping the building through a dense aluminum cladding in wood finish. Lifted from the ground, the opening created allows people to peek through the building interior. The palette in hues of white, black, and brown maintain the serenity of its clean, minimalist massing.

The pool deck – abundant with natural wood tones and lush greens – heading toward the river is designed to frame its view, making the Carmen Hotel the perfect place to witness the renowned Penafrancia River Festival.



Located in the busiest road of the city, the project refines an existing structure chosen to be converted into a four-star hotel. The position of the actual building and the setup of the surroundings make any natural view difficult to frame from the front facade. Starting from this, the approach was to design the building with an inward orientation, leading to the main point of interest of the site - the Naga River, where numerous festivities such as the famous Penafrancia Festival take place. This concept of introversion leads the eyes of passersby to a set of teasers, serving as a preview of what lies inside the hotel. The pool deck - abundant with natural wood tones and lush greens - heading toward the river is designed to frame its view, making the Carmen Hotel the perfect place to witness the renowned Penafrancia River Festival.

RELAXING REFUGE

The Carmen develops a set of visual cues inviting its users into its inner charm and engaging them to a sequence of discovery stages gradually unfolding to the serene pool deck at the back with an admirable view of the Naga river. The facade reflects the general concept of the project by draping the building through a dense aluminum cladding in wood finish. Lifted from the ground, the opening created allows people to peek through the building interior. The palette in hues of white, black, and brown maintain the serenity of its clean, minimalist massing.



SWISS-BELHOTEL BLULANE

LOCATION:	STA. CRUZ, MANILA
CLIENT:	BING UY
YEAR:	2010
PLOT AREA:	1,006 SQM
FLOOR AREA:	11,008 SQM
STOREYS:	SEVENTEEN (17)
STATUS:	COMPLETED

Nestled in the bustling heart of Binondo, Manila, Swiss-Belhotel Blulane stands as a testament to modern luxury and timeless elegance. With architecture and interiors by WTA Design Studio, its striking 17-story structure beckons guests with 171 rooms and suites, boasting contemporary Asian-inspired décor and cutting-edge amenities for a truly indulgent stay.

From leisure escapes to corporate gatherings, Swiss-Belhotel Blulane caters to every occasion. Indulge in culinary delights at two restaurants, unwind at the laid-back coffee shop, or rejuvenate your senses at the spa. The hotel also offers ample meeting and banqueting space, including a magnificent ballroom, ensuring memorable events and celebrations.

Operated by Swiss-Belhotel International, every visitor is treated to first-rate service that epitomizes the warmth of Filipino hospitality. With a blend of comfort, convenience, and value, Swiss-Belhotel Blulane provides a convenient experience for both business and leisure travelers alike.



HIGHLANDS HOTEL

LOCATION:	HIGHLANDS, LEGAZPI, BICOL
CLIENT:	SUNWEST GROUP HOLDING COMPANY, INC.
PLOT AREA:	5,340 SQM
FLOOR AREA:	5,812 SQM
STOREYS:	4
STATUS:	DESIGN DEVELOPMENT

FACADE TREATMENT

Repetitive room layouts however angled slightly towards the prime view. All floors are single loaded with a view to Mayon.

FEATURES

The main approach from the EstanzaTabon road is met with the main restaurant which is a separate structure to the hotel but connected by a bridge. It hovers over the ground where crops are grown with the idea of a farm to table eating experience.

VOIDS

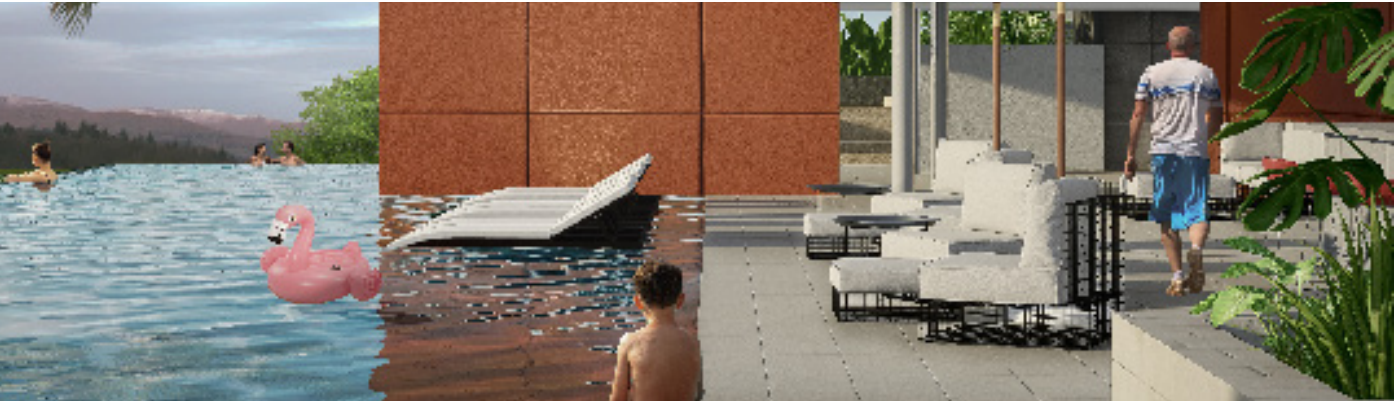
The main approach from the EstanzaTabon road is met with the main restaurant which is a separate structure to the hotel but connected by a bridge. It hovers over the ground where crops are grown with the idea of a farm to table eating experience.



HIGHLANDS CLUBHOUSE

LOCATION:	HIGHLANDS, LEGAZPI, BICOL
CLIENT:	SUNWEST GROUP HOLDING COMPANY, INC.
PLOT AREA:	2,762 SQM
FLOOR AREA:	2,492 SQM
STOREYS:	1
STATUS:	DESIGN DEVELOPMENT

Inspired by the modernist style, the design of the club house is a series of spaces intersected by planes which do not quite enclose or segregate the rooms. Instead, the intention is to create intimate pockets or moments in the building to break away from the larger communal areas. These 'moments' in some cases could be a bench surrounded by planters, or a more private area of the swimming pool created by the mass wall which breaks the length.



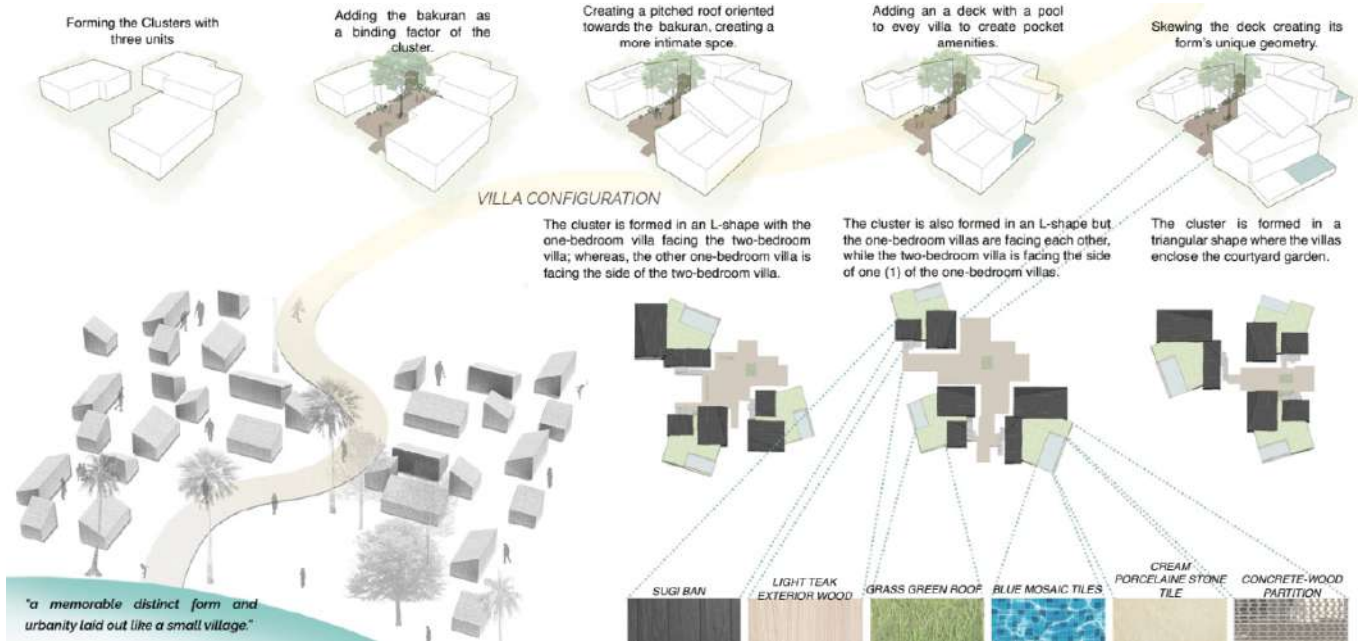
ADAMA RESORT

LOCATION: TALAUDUYONG BEACH, PUERTO PRINCESA, PALAWAN
LOT AREA: 121, 952 SQM
CLIENT: 8990 HOLDINGS INC.
STATUS: DESIGN DEVELOPMENT

Adama Palawan takes inspiration from Palawan’s incredible landscapes and creates a unique destination experience by imagining an idyllic small town by the beach. This is about creating a human environment that avoids the monotonous and embraces the organic.

A resort is not a villa. The enrichment of any resort experience comes from the entirety of its spaces. From pathways to villas, from gardens to dining outlets, it is about painting a complete picture that brings our guests a truly unique experience.





The entire resort is planned as a small town centered on a Main Street. Multiple social functions articulate this Main Street promenade that allows us to develop an organic path that is easily identifiable by wandering visitors by incorporating various resort amenities along this promenade.

The villas are clustered around a courtyard garden that acts as both a buffer and a connecting element. The architecture highlights these hidden gardens and allows us an opportunity to create unique experiences for each.



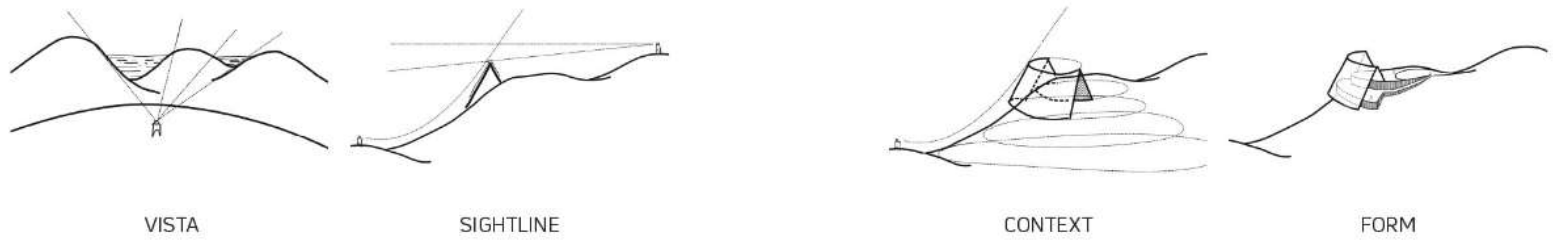
Bakuran Section

Cluster to Cluster Section



SAFARI ESCAPE GLAMPING RESORT

LOCATION: AGONCILLO, BATANGAS
LOT AREA: 200 HECTARES
CLIENT: SKIN STATION INC.
STATUS: UNDER CONSTRUCTION



The project is a private initiative to preserve some of the country's remaining forests amidst rapid urbanization, deforestation, and overpopulation. Throughout the 200-hectare site in the heart of Batangas province, this entry focuses on the community and amenities center that will serve as a hub for in-house guests and walk-in visitors. The building houses recreational spaces including a restaurant, a cafe, function halls, lounging pods and an infinity pool. Below these amenities are support facilities such as the back of the house, rainwater harvesting, and water recycling.

ONDUS BORACAY HOTEL

LOCATION: MALAY, AKLAN, BORACAY
LOT AREA: 2,795.78 SQM
CLIENT: MEZEN REALTY CORPORATION
STOREYS: THREE (3)
STATUS: UNDER CONSTRUCTION



This hotel on the shores of Boracay takes cues from mediterranean architecture, translated through Filipino visuals and textures. The design intent was to maximize the site's beachfront views and passive cooling. Its light and airy form allow for the site's natural features to permeate the interior of the structure, facilitating an incomparable stay on Boracay's white shore.





Main Lobby



View from the beach



Dining Balcony

LAMBA RESORT

LOCATION: LEGAZPI CITY, ALBAY, BICOL
YEAR: 2021
FLOOR AREA: 3,147 SQM
STOREYS: 4
STATUS: CONCEPT

Lamba Resort sits on a mountain site with rolling terrain overlooking the Albay Gulf. The concept takes into consideration the contour of the site, fully utilizing it as a feature of the resort. The rooms and pools cascade towards the sea to take advantage of the cliff's contour, view of the sea and of Mount Mayon. The design is fragmented, leaving areas undeveloped so as to retain the presence of the natural environment around the resort.





The lobby upon entering the main entrance.



The view of the main entrance from the outside.



The view of other rooms from this angle.

The Lamba Resort sparks romance and develops deep contact with nature and its contours. Every level fosters different relationships - with the environment, with oneself, and with other people. Architectural details of the resort are partially embedded into the ground and partially projecting out of the landscape. Subtle passageways and steps create connections between the various areas. Its subtlety breaks the barrier between steps and nature, allowing one to experience nature while navigating through the resort.

Outside the private rooms are lounge spaces for guests to converge and enjoy each other's company as well as enjoy the beautiful view shared by all areas of the development. Pools are situated in every level providing guests access to a semi-private pool for relaxation and serenity.

The amenities are found in the lower levels in close proximity to the beach, creating a public space for all the guests to interact in and utilize. Guests are given a space for relaxation, recharge, renewal and rejoice.

Standing in solitude, the sleek glass entrance to the proposed Lamba Resort is a voluminous space with architectural lines that showcases the horizon beautifully. The space and panoramic view provides a glimpse of the magnificence of the development and its location.



The elevation showing the connection between the reception area to the amenity rooms.

CFI CO-TEL BY SWISS-BELHOTEL

LOCATION: CARRETA, CEBU CITY
LOT AREA: 2912.60 SQM
CLIENT: CFI COMMUNITY COOPERATIVE
STOREYS: TWELVE (12)
STATUS: UNDER CONSTRUCTION

In the bustling landscape of contemporary urban living, providing a multifunctional space that caters to both the short-term needs of travelers and the long-term requirements of students was a paramount. With a sleek and modern facade that blends seamlessly with the surrounding urban landscape, it also emphasizes sustainability and energy-efficient systems to minimize environmental impact.



Hallway



Main Lobby



Standard Queen's Bedroom



Standard Dormitory

SHERATON MANILA

LOCATION:	ASEANA CITY, PARAÑAQUE, METRO MANILA
CLIENT:	2019
PLOT AREA:	2,009 SQM
FLOOR AREA:	626,163 SQM
STOREYS:	16
STATUS:	CONCEPT

Located along the shoreline of Manila Bay accompanied with the beautiful Manila Sunset, Aseana City is one of the leading real estate developments in the country. The project site is adjacent to the major roads Roxas Boulevard and Macapagal Boulevard and is accessible through the main road Belle Avenue.

City Verandas - To break from the steel, glass, and concrete structures of urbanism, the proposed design for the hotel integrates a facade that neutralizes the feeling of an urban environment through the use of greeneries. The integration of plant boxes and louvers at the facade as an extension of the building imitates a veranda just like home with a grander feel.



URBAN ARGO HOTEL BORACAY

LOCATION: STATION 2, BORACAY, AKLAN
CLIENT: 8990 HOLDINGS, INC.
YEAR: 2019
PLOT AREA: 12,508 SQM
FLOOR AREA: 24,659 SQM
STOREYS: 4
STATUS: CONCEPT

Urban Hotel Argo Boracay is situated on sloping terrain located in Boracay. The hotel uses the challenging site to its advantage by creating split levels that provide different views for each room. With over 500 guestrooms, the hotel design takes form from a curved layout that includes spaces for a public courtyard plaza and an amenities garden.



Designing with the objectivity of creating spaces that blurs the boundary of limitations between people and places. Community oriented and stimulates interaction for creating memories. Delivering more than the typical, offering a more experiential immersion within the haven that is Boracay Island. Bringing together locals and tourists in one melting pot that is the Argo hotel. Allowing areas to sprawl and overlap freely with varying environments.

An impressive view is what one would look forward to when dining at Argo's "Social". Given its name, it encourages human interactions by placing communal tables within the space and allowing guests different seating arrangement options when dining. The Social opens up to the landscape view along with the pool lounge and bar which makes for a very picturesque backdrop.



URBAN RETREAT

The design of each bedroom type imparts a cozy, intimate space, and the convenience of hotel-living. The concept of openness is applied within the guestrooms by removing doors from wardrobe cabinets and highlighting an open style storage which frees up the space visually. The toilet also opens up visually to the bedroom by having a window cutout within the perimeter wall opening up all of the elements into one whole space all together.



MALINAO SIARGAO RESORT

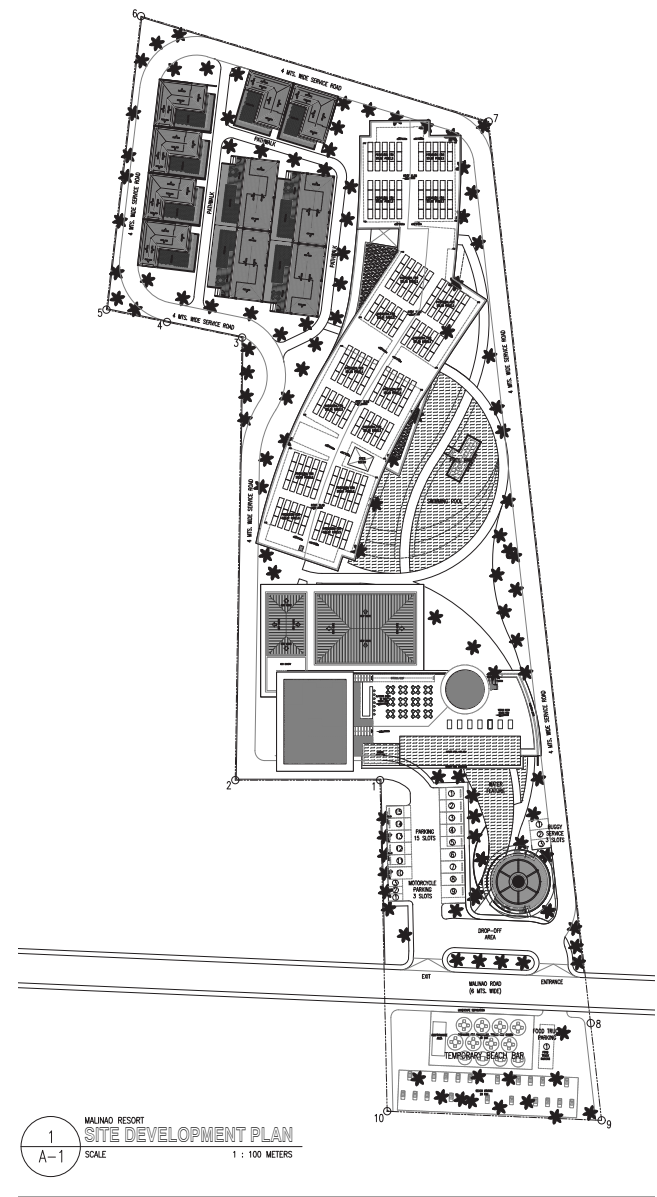
LOCATION: SIARGAO ISLAND, SURIGAO DEL NORTE
LOT AREA: 1.26 HECTARES
CLIENT: GCI HOSPITALITY
STATUS: SCHEMATIC DESIGN



Main Reception



Clubhouse Lounge



The Malinao Siargao Resort is an 80-room hotel development situated in the wetlands of Siargao Island, also known as the “surfing capital” of the Philippines. The project is composed of 4 building groups: the reception at the entrance, the clubhouse, the 3-storey accommodation building, and private villas clustered at the rear.





1. The Reception is a small example of the design concept of the whole development. A facade of aluminum louvers creates a visual separation of the interior space to the environment, while keeping an open layout, just like passing through a small group of mangroves.



4. The Accommodation Building provides an intermediate buffer between the private villas and the common areas. Rooms maximize the limited visual variety provided by the narrow site frontage. The juxtaposition of the building to the central swimming pool creates an image of an oasis in the middle of a mangrove forest.



Clubhouse



Infinity Pool

2. The Clubhouse, located at the narrow choke-point at the center of the lot, serves as a buffer between the local beach setting and the private landscape. Offices and back-of house facilities are located in this building to maximize the logistical advantage of its location.

3. Multipurpose areas: the restaurant, function hall, and the infinity pool, are both accessible from the beach and the accommodation areas, making it a focal point between the public and private space. Similar to the function of a tree trunk, it serves as the strategic point that channels the pathways and roads that lead to all buildings.



5. The Villas are the culmination of the whole design concept. The cluster of private spaces create an aura of a calm and relaxing built environment that blends with the tropical jungle.



HOTEL SOUTH DRIVE

LOCATION: BAGUIO CITY, BENGUET
LOT AREA: 7,154 SQM
CLIENT: VALLEY BREAD, INC.
STATUS: DESIGN DEVELOPMENT

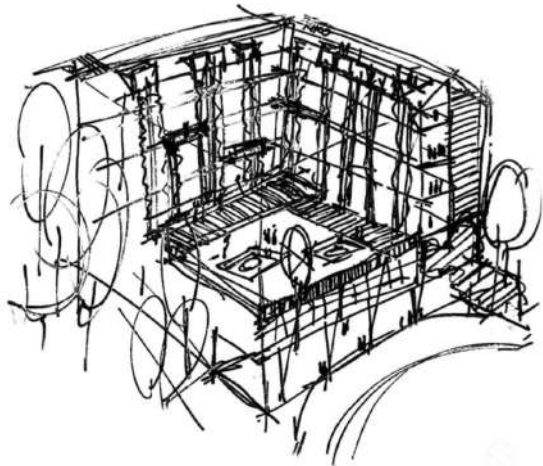
Front View



2 Bedroom Unit



Living Area



This hotel is located at the center of South Drive, Baguio. It is a three-star business hotel promoting the character of the Cordillera. The hotel also includes restaurant, bar, function hall and commercial stores below. It is a 8-storey building with loft having a facade that blends with its surroundings. This hotel will serve as an invitation of the village aristocrats for the people to experience the Cordillera's Feast of Merit creating a dynamic local venue with layers of history, personality and texture.

The interiors of this hotel was designed with modern sensibilities, and subtle touches of the culture and vibe of the Cordilleras. Guests are welcomed by spaces that are clean, crisp and easy on the eyes, detailed with Ifugao Ikat woven habi textiles.



PICO SANDS HOTEL

LOCATION: PICO DE LORO, NASUGBU, BATANGAS
FLOOR AREA: 1,644.43 SQM
CLIENT: SM PRIME HOLDINGS INC.
STATUS: COMPLETED

Familiar shades of the shore mixed with sunny hues give a touch of whimsy to this serene escape along Pico de Loro in Nasugbu, Batangas. This hotel retrofitting project covers one floor, starting from the elevator lobby to each of the guest rooms. Flowy textures and warm lighting line the halls going into each guest room.



Aerial View



Premiere Suite



Penthouse Living Area



Penthouse Bedroom

BANAUE HOTEL

LOCATION: ILOGUE, BANAUE, PHILIPPINES
CLIENT: TIEZA
YEAR: 2018
PLOT AREA: 1,3895 SQM
STATUS: CONSTRUCTION





Situated in the heart of the world-famous millennia-dated Banaue Rice Terraces, and at 4,000 feet above the sea level, the Banaue Hotel and Youth Hostel is a standard class hotel that captures the perfect blend of modern day hotel amenities with the centuries-old traditions and culture of the locality, while also offering the perfect accommodation for nature lovers and adventurous tourists.

Having been operational since 1974, the original hotel has expanded twice and, to date, the structure has two wings. The old wing is a two-storey building while the new wing is 5-storeys. The hotel's interior showcases the use of pinewood bringing the guests closer to nature. The climate is cool and the place is ideal for business conventions or weekend getaways.



ORGANIC FUNCTIONALITY

Designing with the objectivity of creating spaces that stimulates relaxation and intimacy with nature, spaces which condition the mind and channels how people experience spaces whilst prioritizing human needs.

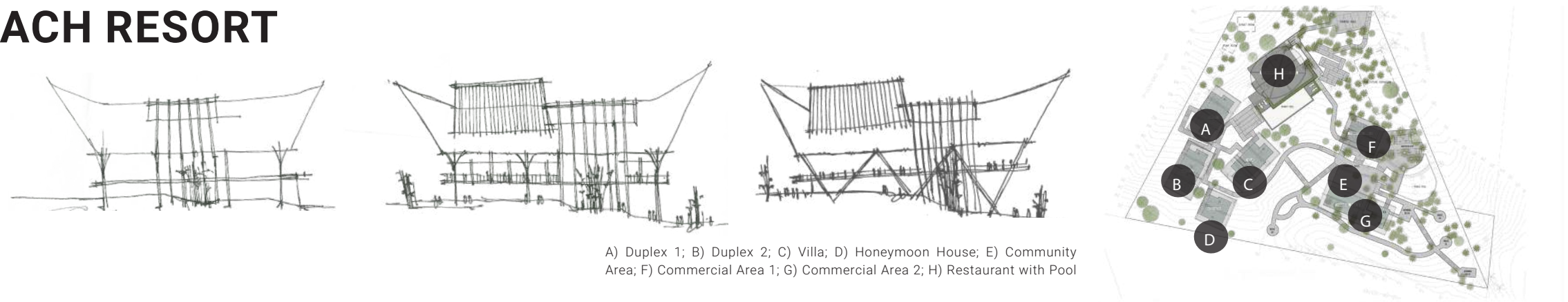


LOCAL LUXURY

The Banaue hotel imbibes the warmth of a cabin with locally sourced natural wood finishes and soft, neutral tones. It is kept fresh and modern through rectilinear silhouettes, sleek furniture selection and picture windows that allow the guest to enjoy the beauty of the rice terraces in the comfort of their room.

BALANGAY EL NIDO BEACH RESORT

LOCATION: BRGY. CORONG-CORONG, EL-NIDO,
LOT AREA: PALAWAN
CLIENT: 7,331.7 SQM
STATUS: REISA PROPERTY MANAGEMENT
DESIGN DEVELOPMENT



Beaches will always be one of the top tourist destinations in the world, The Philippines, particularly Palawan, is blessed to be home to many of the world’s best beaches and Natural ecosystems.

The Balangay El-Nido beach Resort concept is adapted from Balangay Boat which our ancestry used before as dwelling unit at sea which serves as protection and living space from the harsh weather at sea.

The Resort Features 2 Duplex, 1 Villa, 1 Honeymoon House, 2 Commercial Buildings and a Community Area with a Pool. Each Space is connected by boardwalks open to natural ventilation and natural light.

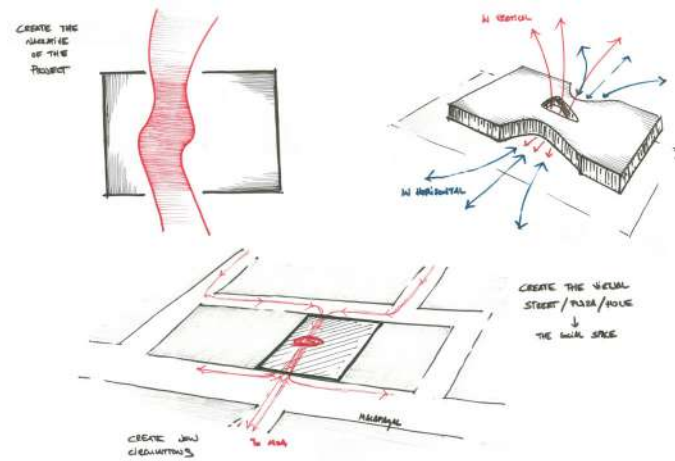
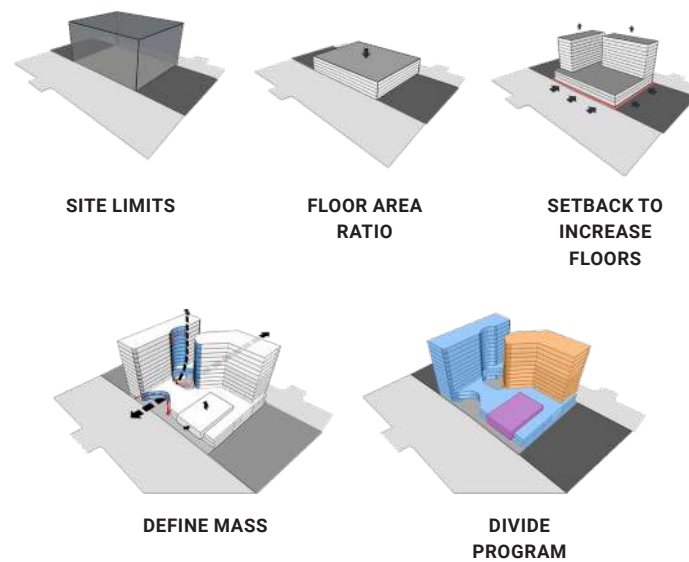


GOLDEN BAY HOTEL

LOCATION: PASAY CITY, MANILA
YEAR: GOLDEN BAY PROPERTIES
PLOT AREA: 2018
FLOOR AREA: 5,184 SQM
STOREYS: 46,316 SQM
STATUS: CONCEPT

The Golden Bay Hotel is a business hotel development designed to cater to the large number of locals, businessmen and women, and tourists who visit the Bay City area of Manila. The fluidity in its design breaks horizontal barriers and creates a movement that promotes interaction. A curved walkway was incorporated at the center of the rectangular site defining the initial narrative of the project.





Process in creating the form of the project.

A vertical hole was added to connect the elements surrounding the space, creating a form of a plaza or social space. Given that the program includes uses for offices, commercial and hospitality, the towers were defined and situated to consider the social space below and at the center of the whole site. Movement through a diversity of spatial volumes will create harmonious and interactive energy that strengthens the community that will use the space.

The Forum Concept is a narrative to create spaces where people can interact. This can be in the form of an interesting or attractive virtual street, plaza, and public steps. The main concept of identifying the Golden Bay Forum as a social building is represented in the steps and social areas in the hotel that can encourage social interactions. The Plaza acts as the focal point of the three-building typologies being implemented, while the virtual street promotes the flow of the community around the area.

Being a relatively new development in Metro Manila, the Bay City area has distinct guidelines and conditions that must be followed to harmonize and integrate the built and natural environment. The roadways follow a grid pattern

The Forum Concept

with lots having similar rectangular proportions. Being within proximity to the airport, buildings must adhere to the height limitations of the Ninoy Aquino International Airport (NAIA) aerodrome. While the relatively flat terrain is devoid of topographical features, the Bay City area within Manila Bay, Philippines is a reclamation area that has gained strong influence and a popular reputation amongst cities within Metro Manila. Its surrounding built environment has already created a spatial context and character that makes it a unique and special setting for development.

As the area becomes increasingly attractive for different typologies, the evolution of an architecture that fits the scale of the surrounding developments is evident. This goes in line with the development of larger volumes of floor plates for commercial buildings, which makes it more adaptive and more open to flexible and varying spatial and commercial configuration.



AQUASCAPE HOTEL

LOCATION: MALABAGO, BADIAN, CEBU
CLIENT: SILVERWINGS INTERNATIONAL INVESTMENT INC.
YEAR: 2017
STATUS: CONCEPT

Aquascape is a seaside development located in the Municipality of Badian, 97.6km southwest of Cebu City, Philippines. The development sits on a 4,300 square meter property and envisions a community geared towards wellness and adventure. Aquascape was designed to accommodate a variety of needs and interests. The development includes a condominium, a hotel, villas, and a clubhouse designed to promote a lifestyle that people of all ages will enjoy and appreciate. With its available amenities and features, it becomes a venue for a comfortable retreat and escape away from the city





MODERN TERRARIUM

The narrative of the whole interior concept revolves around giving the interiors the essence and beauty of not just any forest in general but one which is more specific and deeply rooted to the Filipino culture, namely, a Bamboo rainforest. To have interiors that is experiential for guests, the design evokes the feeling one would get standing beneath this vast rainforest. The play of shadows piercing through patterns, intricacy to detail, rich texture and powerful vertical lines would be the revolving characteristics within this space.

Guest Rooms & Ballroom Amenities

The typical guest room floors embrace an open plan that maximizes natural lighting and ventilation that mirrors the essential qualities of a tropical bamboo rainforest. Elements of the bamboo plant are interpreted within the space through the exploration of its different silhouettes, textures, stains and function as seen through the furniture and its finishes.





The Aquascape Hotel acts as a prelude to the diving expeditions commonly done by tourists within the local vicinity. Being intimately located near a famous dive spot in Badian Cebu the hotel aims to give guests an immersive experience.



Oversized windows that invite natural light in and open common areas allow the surrounding environment to take part in setting the mood within spaces and sets an ever-changing backdrop for the interiors.



TROPICAL LOUNGING

Light, sandy wood tones with rattan accents run against light beige fabrics and soft finishes to create the cabana experience within the guest's living area. Blue wallpaper accents return from the wall to the ceiling to emphasize the illusion height as if the waves of the sea are enveloping the room.



COASTAL RETREAT

With an unobstructed view of the outdoors, the room's decor is kept simple with a wooden bedframe, native wall accents and plush beddings that carry out the blue tones of the sea making it a comfortable extension of the outside environment.

BITOON HOTEL

LOCATION:	CEBU CITY, PHILIPPINES
YEAR:	2017
PLOT AREA:	993 SQM
FLOOR AREA:	7,183 SQM
STOREY:	14
STATUS:	CONCEPT

The Bitoon Hotel is located at Juan Luna Avenue, Cebu Center. Juan Luna Avenue cuts through the middle of Mabolo and is the main road in this district. It rises all the way from the beautiful, blue sea until the high green mountains. Across the hotel is the San Carlos Seminary, which offers an open view to the Cebu business park.

The hotel which will be one of the tallest building in the district, shall provide a vertical garden which gives the building its identity and provides enough privacy for the rooms. Building plants also help keep the urbanizing Cebu in economical friendly balance.



PALO LEYTE HOTEL

LOCATION:	PALO, LEYTE
YEAR:	2017
PLOT AREA:	6,480 SQM
FLOOR AREA:	14,057 SQM
STOREYS:	9
STATUS:	CONCEPT

Palo Vista Hotel is situated in a busy town in Leyte, active in commerce and in tourism. The site falls adjacent to an existing natural environment with rich vegetation and a view of the sea on its rear side. This provides a beautiful view and a relaxing atmosphere in the area. Being accessible to various key establishments, the structure takes into consideration the various zones in the surrounding area.

The program includes a double-volume ballroom to avoid congestion of its users with the hotel guests. Separating the hotel floors creates intimate and private spaces for hotel guests. The facade was split into two to create character, utilizing corten steel to add a contemporary feel to its exterior design. Bamboo was then incorporated as a design feature on the facade to add a natural and organic vibe for its users.



Main Lobby

Natural light beams right through the gray marble flooring of the main lobby. Sand-colored stone clad the walls to complement the wooden elements that are adapted from the bamboo tree. Wood slats adapted from the bamboo's natural rectilinear form are spread throughout the space and are interpreted using different materials ranging from wood to metal. These elements add texture movement allowing the guests to feel a relaxed and understated form of luxury.

Breakout Lounge

Flowing seamlessly from the Lobby and Ballroom, the tropical bamboo rainforest concept is implemented to the break out space as well. Functioning as a lounge pre or post business meetings, casual rendezvous or a breakout space from the ballroom events, the space is a flexible lounge that initiates conversation, relaxation and recreation. Light and neutral soft furnishings with wood frames or finishes exude warmth and approachability to the lounge. It is contrasted by the rigid mix of textures from the wood slats and clad tiles on the columns. The breakout space is further complemented by splashes of green, indoor plants and picture windows to break the monotony of the space and to also to add life by giving the visitors an unparalleled view of the Leyte skyline.



The narrative of the whole interior concept revolves around giving the interiors the essence and beauty of not just any forest in general but one which is more specific and deeply rooted to the Filipino culture, namely, a Bamboo rain forest.

To have interiors that is experiential for guests, the design evokes the feeling one would get standing beneath this vast rain forest. The play of shadows piercing through patterns, intricacy to detail, rich texture and powerful vertical lines would be the revolving characteristics within this space. This concept aims to give an ambiance to the hotel that is different and unique in relation to other hotels with a general concept of comfort. It offers something much deeper and richer in experience.

EAST SANDS RESORT

LOCATION:	PANGLAO ISLAND, BOHOL
CLIENT:	ALTURAS GROUP
YEAR:	2017
PLOT AREA:	13,710 SQM
FLOOR AREA:	20,573 SQM
STOREY:	9
STATUS:	CONCEPT

The East Sands Resort is a delicate, honest, and pure place. It aims to tap into the unconscious mind, evoking a sense of calmness in which people can trust. The architecture creates an organic but curated space that stimulates relaxation and intimacy, a space which conditions the mind and dictates how people experience spaces whilst prioritizing human needs.

The resort is planned around a main access lane that allows visitors to easily navigate the different amenities and sceneries, from the lobby to the restaurant, pool deck, spac, and to the beach. The design utilized the orientation and slope of the site to maximize views from the guest bedrooms. Strategically positioned water features harness the power of the sea breeze and wind patterns to allow cool air to flow through the resort.

The spaces within the resort blurs boundaries between nature and the interiors by bringing the outdoor elements inside. Plenty of natural elements are incorporated into the design, while still maintaining comfort within. Areas are intended to create unique experiences for all and were designed to utilize textures and finishes that translate the same essence of design all throughout. Bigger sets of furniture and lower furniture were used to create multiple intimate lounge spaces. Neutral and warm shades were used to evoke comfort and familiarity.

Much like nature, free-flowing forms and cascading details were applied in outdoor areas, further enhancing its natural setting and thus creating a very natural and deeply relaxing atmosphere.



East Sands draws upon the wide and open tidal landscapes that are the secret delight of the Panglao island. The very site 's specific and particular feature defines the experiential quality of the project by focusing on a landscape that is ephemeral yet constant. The resort imbibes water cuts and tidal structures that create vertical forms that are hollowed out from the landscape.

It will be the first resort in Panglao with a distinctly modern tropical architecture of wide overhangs and deep shadows that feature shaded courtyards and patios. Natural materials like sandstone and wood are featured prominently on site to create richness within the resort's clean forms.

Situated along the white stretch of beach in Panglao, Bohol rests a collection of intimate structures that separates itself from the typical resort design approach in the area. The Resorts Romantic architecture, intimate landscapes and sacred water features offers a unique experience for its guests. Application of natural materials and finishes for the interiors allows the essence of Bohol to enter and flow within its spaces creating a unique and honest room that anchors itself with its surrounding environment.



GRAND GALLEON HOTEL

LOCATION: LAHUG, CEBU CITY
CLIENT: LLOYD CHU
YEAR: 2016
PLOT AREA: 988 SQM
FLOOR AREA: 9,375 SQM
STOREYS: 17
STATUS: FOR BIDDING

In a highly urban and rapidly progressing city such as Metro Cebu, the challenge for a new boutique hotel is to establish its identity while still staying honest to its nature. The 9,375 square meter boutique hotel project will sit on a 988 square meter lot. With 17 storeys, 126 rooms, 2 Grand Ballrooms and a public plaza that will connect to the existing commercial strip on the site, the Grand Galleon Hotel is a four-star boutique hotel designed to cater to Cebu City's modern crowd of tourists, businessmen and women, and locals.

The Grand Galleon Hotel is a 4-star boutique Hotel designed to exist in a 'sea' of traditional contemporaries located in Cebu. It takes inspiration from the historic trade ships of the same name that spearheaded the country's endeavors into the global market. Given Cebu's continuing legacy in socio-economic growth, the team arrived at an architecture that embodies 'movement' – a motion in form that echoes the gravitas of a ship sailing in the open waters of the pacific. This hopes to provide a character of sensible luxury to the hotel that touches on contemporary design principles. Earth tones and wooden elements outline the building with organic forms giving guests a warm, and inviting experience.



Hotel Bedroom Interior



All-day Dining



Main entrance with a wide area for steps, that function as a social space for the public.



FRONT
ELEVATION

RIGHT SIDE
ELEVATION



THE ARBOR HOTEL

LOCATION: BAGUIO CITY, BENGUET
CLIENT: PLAYINN INC.
YEAR: 2015
PLOT AREA: 1,300 SQM
STOREY: G + M + 5 + 3B
STATUS: CONSTRUCTION

The Arbor Hotel is designed to suit the milieu of Baguio. Known for its vast numbers of parks due to its well thought of master planning by the well-known architect Burnham, Baguio enjoyed the visibility of its open spaces, with the shade and scenery of pine trees and other oriental vegetation. It declares that the travelers/ guest belongs to the community, that they deserve the home that they need in the area.

Integrating the openness that Baguio’s breezy environment has to offer, the Arbor hotel’s main goal is to create a barrier-free space. Slatted partitions, picture windows and proper zoning keep the space bright, spacious and dynamic without feeling confined by four walls which guests are usually accustomed to.

PINING THROUGH

The Arbor hotel’s lobby and amenities mimic the verticality of the pine trees in which Baguio is known for. Tall wood slats and linear silhouettes on the furniture create the illusion of height. Featuring textured stone, indoor plants and warm-toned lighting, the hotel becomes an extension of the lush greenery that the province of Benguet is known for.



IMPERIAL PALACE RESORT AND HOTEL

LOCATION: PUERTO PRINCESA CITY, PALAWAN
YEAR: 2014
FLOOR AREA: 77,929 SQM
STOREY: 12
STATUS: CONCEPT

The Imperial Palace Palawan aims to achieve a balance between the traditional and modern by using natural materials such as wood and stone applied in modern materials and construction techniques that is surrounded by breathable spaces and bodies of water. This resort hotel will be a relaxing escape from the city.

The best color palette to be applied is drawn from the Puerto Princesa scenery itself. Using a neutral scheme touched with shades of coral blue and forest greens throughout the interiors will highlight the beautiful ambiance that will allow the resort to blend in and yet stand out.



SUMMIT HOTEL

LOCATION:	ANTIPOLO, RIZAL
CLIENT:	ROBINSONS LAND CORPORATION
YEAR:	2015
FLOOR AREA:	5,031 SQM
STOREY:	6
STATUS:	CONCEPT

Strategically located on an elevated plane, the 6-Storey Summit Hotel will be a new destination for tourists and locals.

Aside from the natural view of the hilly and mountainous topography of Antipolo, the facility also offers a different experience on the ground. Providing an open space at the street intersection generates an entertainment area that connects the hotel to the mall, transforming this space into a community plaza. Integrating it with the landscape adds more coherence to this context and creates a lively environment.

The hotel adapts the material of the existing conditions of the site. The facade contributes as an attraction that pulls the activities together as one. It builds the entity of a breathing structure, celebrating the idea of nature. This reciprocal process of give and take is an ecology of buildings, a conversation between nature and humanity.



CHANCELLOR HOTEL

LOCATION: STATION 2, BORACAY ISLAND, AKLAN
CLIENT: GLOBAL ESTATES RESORTS INC.; MEGAWORLD
YEAR: 2017
PLOT AREA: 1,881 SQM
STATUS: CONSTRUCTION



Conveniently located within the immaculate island of Boracay, The Chancellor Hotel is the ideal tropical refuge for those seeking comfort, serenity and shelter by the shore. The guests are greeted by large picture windows upon the entrance of the main lobby. It serves as a seamless transition, enabling the resort to be an extension of the beach allowing bursts of natural light to illuminate the space.

Neutral hues of wood and stone tiles in various textures surround the resort to mimic the fine sand. The plush furniture and art pieces that come in cascading shades of teal and cerulean seeks to resemble the refreshing and dynamic movement of water crashing on the coast.



COASTAL TAVERN

Sandy Hues mirror the coastal landscape as it attempts to bring the outdoors in. Pacific tones manifested through the upholstered dining chairs and accent pieces mimic the ocean waves washing through the sand. Hanging shelving add interest as it creates an illusion of height while serving as additional storage and display.



DAZZLING DUNES

The same elements intertwine within the resort's ballroom. Large wood panels are broken apart by vertical metal inlays for the illusion of height. Warm lighting and brass details keep the ballroom luxurious and appropriate for special events and activities. The rest of the amenities remain consistent with the resort's overall concept of being an extension of the beach without sacrificing function based on the anticipated needs of the guests.

THE ORIENTAL LEYTE

LOCATION: TACLOBAN, LEYTE
CLIENT: LKY DEVELOPMENT CORPORATION
PLOT AREA: 10 HECTARES
FLOOR AREA: 12,900 SQM
STOREYS: 2
STATUS: COMPLETED

Adjacent to the historic MacArthur Landing Memorial is The Oriental Leyte, a 10-hectare resort development in Leyte, Philippines. Fronting the expansive shoreline of Red Beach, its 65 guest suites along with 1st class amenities including three grand ballrooms, a gym, a spa, and family rooms make a tropical retreat. The plan is cut and clustered to frame surprising views and openings throughout the development. The hotel building surrounds the pool deck to make it private and to provide a contrasting backdrop to the open vistas of the beach.

A tropical sojourn with the sea, the architecture of The Oriental Leyte takes advantage of the climate by creating a seamless transition from interior to exterior. The sides facing beach appear very open, light, and permeable to encourage a seamless spatial relationship with the sea. To address the excessive sunlight and rain of a tropical climate, extensive overhangs and brise-soleil are integrated in the overall design adding character to the minimalist canvas.



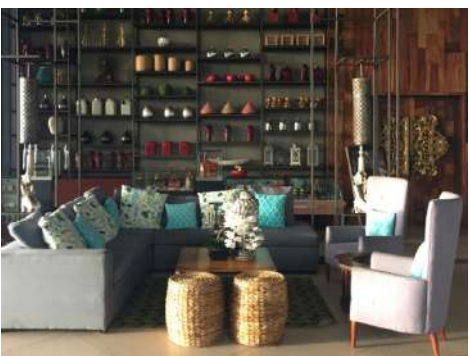
Pool Area



Veranda



Bedroom



Lobby





Architecture must be a searing passion for new ideas as we strive and continue to make our cities beautiful.

WILLIAM TI, JR.
PRINCIPAL ARCHITECT

William graduated from the National University of Singapore (NUS) with a Master's Degree in Urban Design in 2012 and acquired his bachelor's Degree in Architecture from the University of Santo Tomas (UST) in 2002. He placed 12th in the June 2003 Architecture Board Exam and has been practicing architecture since. Together with friends, he formed a partnership in 2005, and finally founded WTA Architecture and Design Studio in 2007. In the 19 years of his professional career, he has worked on hundreds of projects ranging from retail shops and housing projects to large scale malls to condos as well as hotels and master-planned developments.

Currently, with a team of about 100 architects, engineers and designers, he has been working extensively on large-scale developmental work.

As a firm believer in sustainable planning and the advantages of urban living, he tries to imagine a better curated and more design-focused society where beautiful things and pleasant environments are ubiquitous, even in the densest city centers. He avidly collects superhero toys religiously reads comic books and fantasy novels. On the rare day off from architecture, he wanders around as a student of life, observing urban conditions.

Why does architecture matter?

Do we build for everyone when we create amazing destinations and grand institutions? Why do we constantly put barriers and restrictions in the name of safety and security? Globalization and rapid urbanization have wrought about a new set of situations and problems that requires change in what we build. Social Architecture strives to end this friction and loss of connection by breaking down the institutions, ushering them towards the people—it creates with communities in mind.

We believe that in the pursuit of social architecture, there is room to investigate this stream of thought. Social Architecture allows

us to rethink and reconnect with our institutions. It is an architecture that seeks to break down barriers and make public space truly public. The architecture of tomorrow must become more thoughtful and inclusive. We have long neglected the underserved, and in doing so, we have built up cities that continue to pull us apart. Architecture matters because we can change this. Architecture matters because it can create a built environment upon which a strong and responsible citizenry can be built.

We invite you to join us as we continue our journey to push for change through Social Architecture and a more meaningful practice.

WTA Design Studio

Metrosquare Building, 224 Ortigas Ave Ext.
Brgy. Greenhills, Metro Manila, Philippines

wtadesignstudio.com

+ 632 8570 4148